



# **Conservation of a Qing-Dynasty Bodhisattva Statue**

**Kathryn Brugioni**

**Conservation Center, Institute of Fine Arts, New York University**





Columbia S3829  
Before Treatment  
September 16<sup>th</sup>, 2013



Columbia S3829  
After Treatment  
March 1<sup>st</sup>, 2014

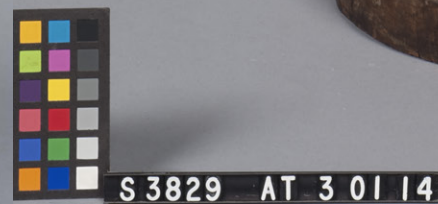




Columbia S3829  
Before Treatment  
September 16<sup>th</sup>, 2013



Columbia S3829  
After Treatment  
March 1<sup>st</sup>, 2014





# Outline

Art-Historical Analysis

Condition

Technical Analysis

Conclusions



Columbia S3829  
Before Treatment  
September 16<sup>th</sup>, 2013







# Outline

**Art-Historical Analysis**

Condition

Technical Analysis

Conclusions

Columbia S3829  
Before Treatment  
September 16<sup>th</sup>, 2013







# Outline

Art-Historical Analysis

Condition

Technical Analysis

Conclusions

Columbia S3829  
Before Treatment  
September 16<sup>th</sup>, 2013







# Outline

Art-Historical Analysis

Condition

Technical Analysis

Conclusions

Columbia S3829  
Before Treatment  
September 16<sup>th</sup>, 2013







# Outline

Art-Historical Analysis

Condition

Technical Analysis

Conclusions

Columbia S3829  
Before Treatment  
September 16<sup>th</sup>, 2013





# Art Historical Study



**Art Historical Study**

**Iconography and Typology**



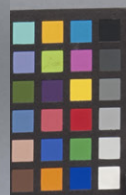
# Missing Elements



Columbia S3829  
Before Treatment  
September 16<sup>th</sup>, 2013



Columbia S3829  
After Treatment  
March 1<sup>st</sup>, 2014



S 3829 AT 3 01 14



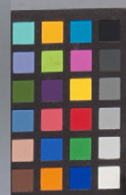
# Missing Elements



Columbia S3829  
Before Treatment  
September 16<sup>th</sup>, 2013



Columbia S3829  
After Treatment  
March 1<sup>st</sup>, 2014



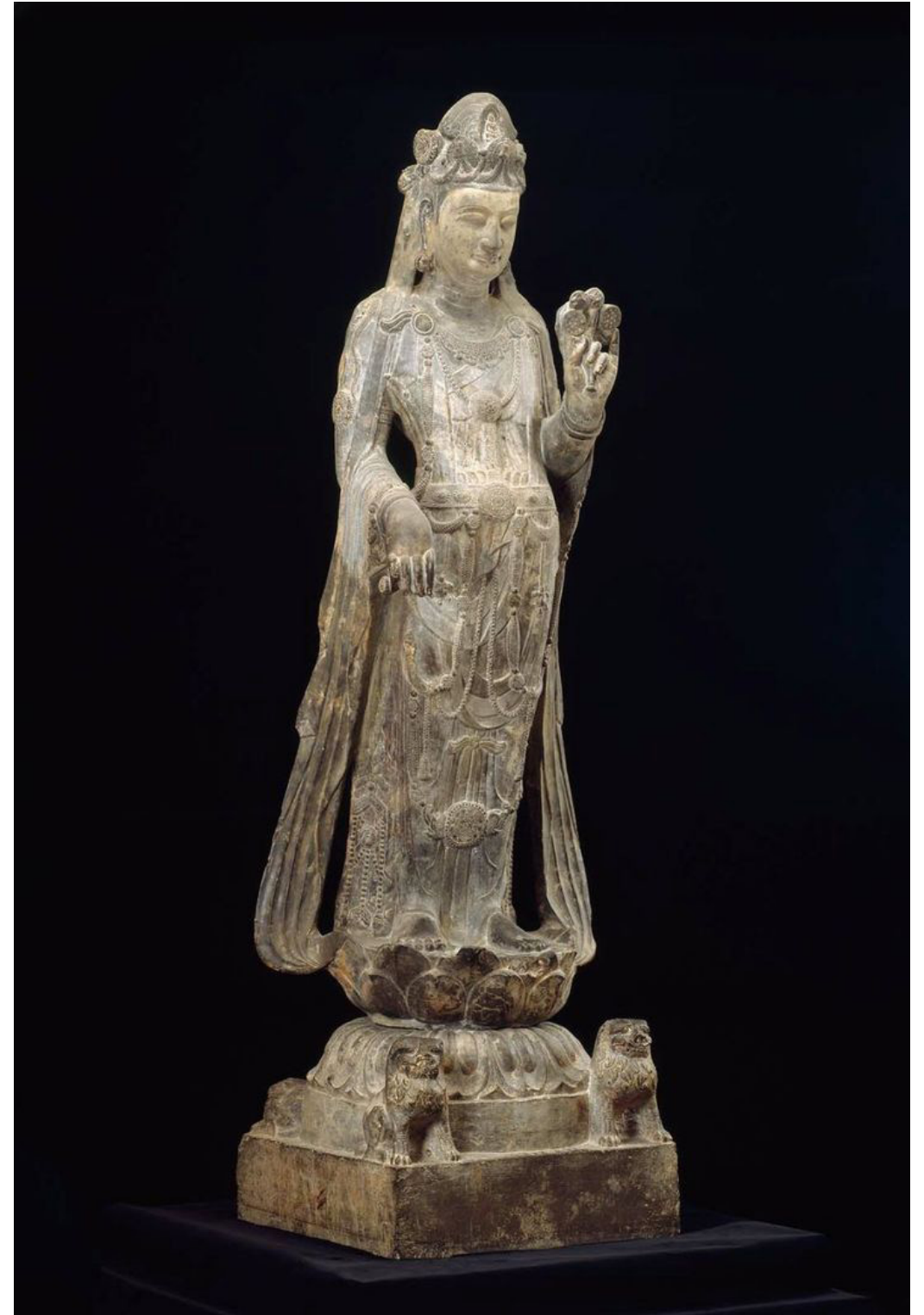
S 3829 AT 3 01 14



# Bodhisattva Guanyin (觀音菩薩)



Avalokitesvara (Padmapani?) with lotus and *varada mudra*  
ca. 9th century. Stone. 106 cm  
Nalanda, India  
National Museum, New Delhi



Guanyin Holding a Lotus  
ca. 580. Stone. 249 cm  
Museum of Fine Arts, Boston





Viśvabhūta Lokeśvara Dharmadhātu Lokeśvara Vajrakhanda Lokeśvara Viśvabhūta Lokeśvara



Vajradhātu Lokeśvara Śākyabuddha Lokeśvara Padmapāṇi Lokeśvar Mahāsthāmaprāta Lokeśvara



Left: Bhattacharyya, Benoytosh. *The Indian Buddhist Iconography*, 2nd ed. K.L. Kukhopadhyay: Calcutta, India, 1958.  
 Right: Thirty-Three Forms of Guanyin Scroll. 18th century (Qing Dynasty)  
 Silk plain weave with metallic brocading wefts mounted on silk and metallic complex weave. 215.3 x 82.2 cm  
 Philadelphia Museum of Art





Thousand-Armed Guanyin.  
Ming Dynasty (1368 AD–1644)  
Lacquered wood. 81.3 cm  
Barakat Gallery



Guanyin in Water Moon Aspect  
11th century (Liao Dynasty)  
Polychrome wood. 46.5 cm  
Metropolitan Museum of Art



Guanyin with a Child and Acolytes. Kangxi Period (1662–1722)  
Dehua Porcelain. 25 cm  
E. Pranger Oriental Art, Amsterdam



# Later Comparanda



Guanyin. Late Ming/ Early Qing  
(17th/18th century)  
Polychrome wood. 210.8 cm.  
Christie's New York.  
Sale 1639, Lot 344.





# Art Historical Study

## Context of Use





Shuanglin Temple. Song–Qing Dynasties  
Pingyao, Shanxi Province





Great East Hall, Fugang Temple. 857 CE (Tang Dynasty)  
Statues repainted in 1930s  
Wutai County, Shanxi Province

Sakyamuni flanked by Bodhisattvas and the Heavenly Kings  
Wanfo Hall, Zhenguo Temple. 963 CE (Northern Han, Five Dynasties Period)  
Pingyao County, Shanxi Province





**Condition**





Qing-dynasty polychrome sculpture showing significant surface loss due to the statue's position in an uncovered temple hall. Shuanglin temple, Shanxi.



Qing-dynasty polychrome sculpture showing a similar color palette to the Avery Library Guanyin. Significant surface loss has occurred. Shuanglin temple, Shanxi.





Columbia S3829  
Before Treatment  
September 16<sup>th</sup>, 2013



Columbia S3829  
Before Treatment  
September 16<sup>th</sup>, 2013



# Technical Study

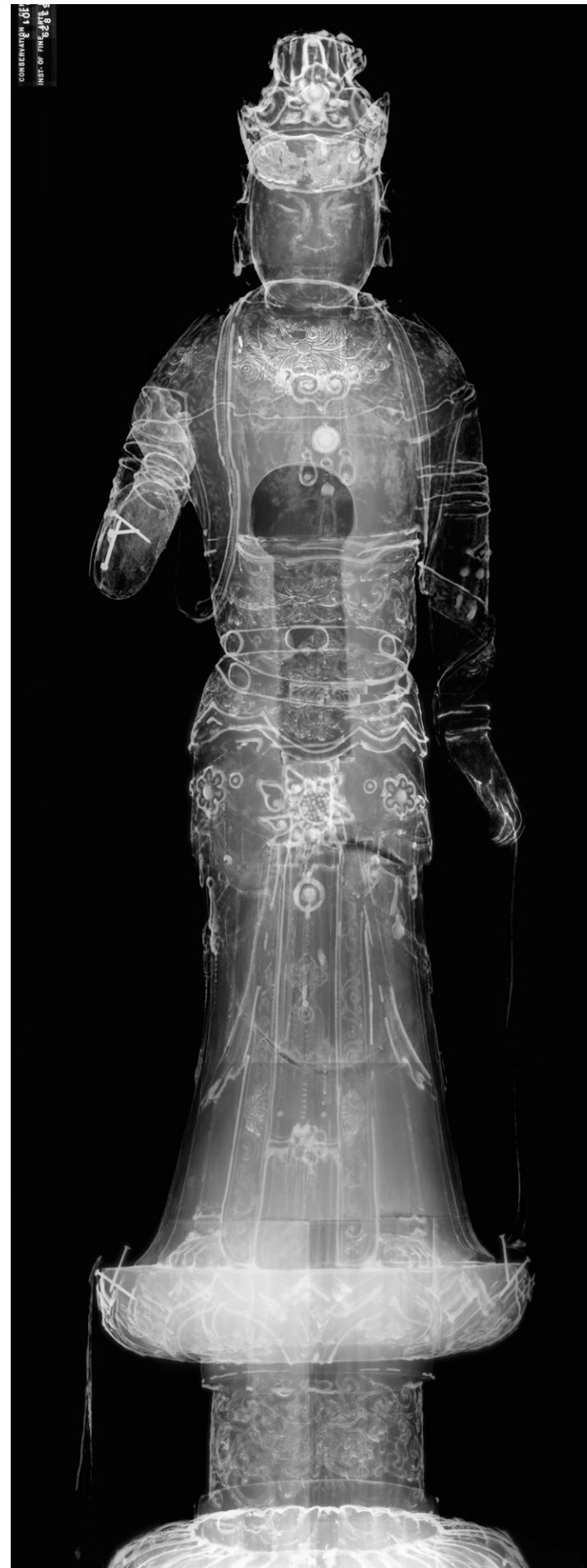
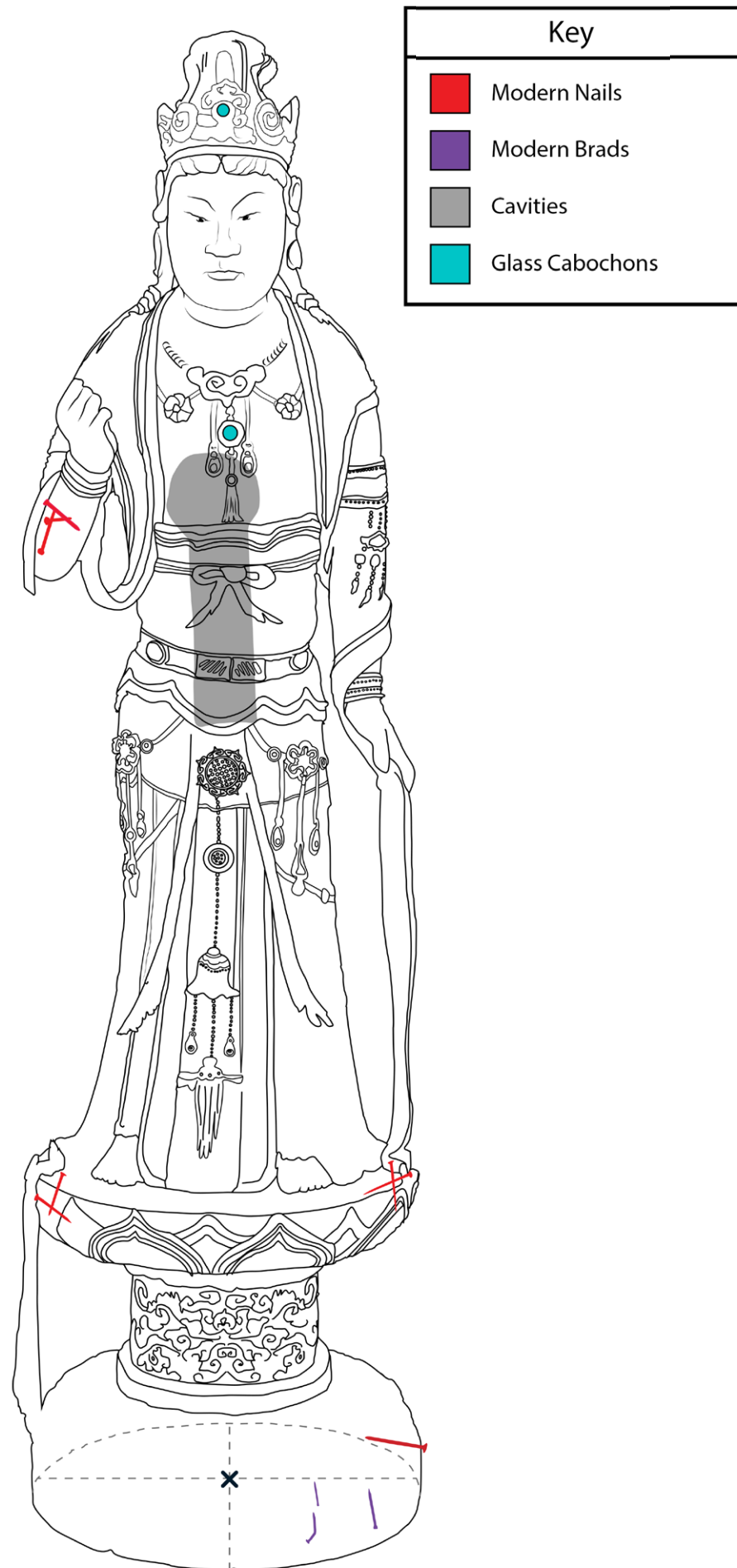


# Technical Study

## Structure

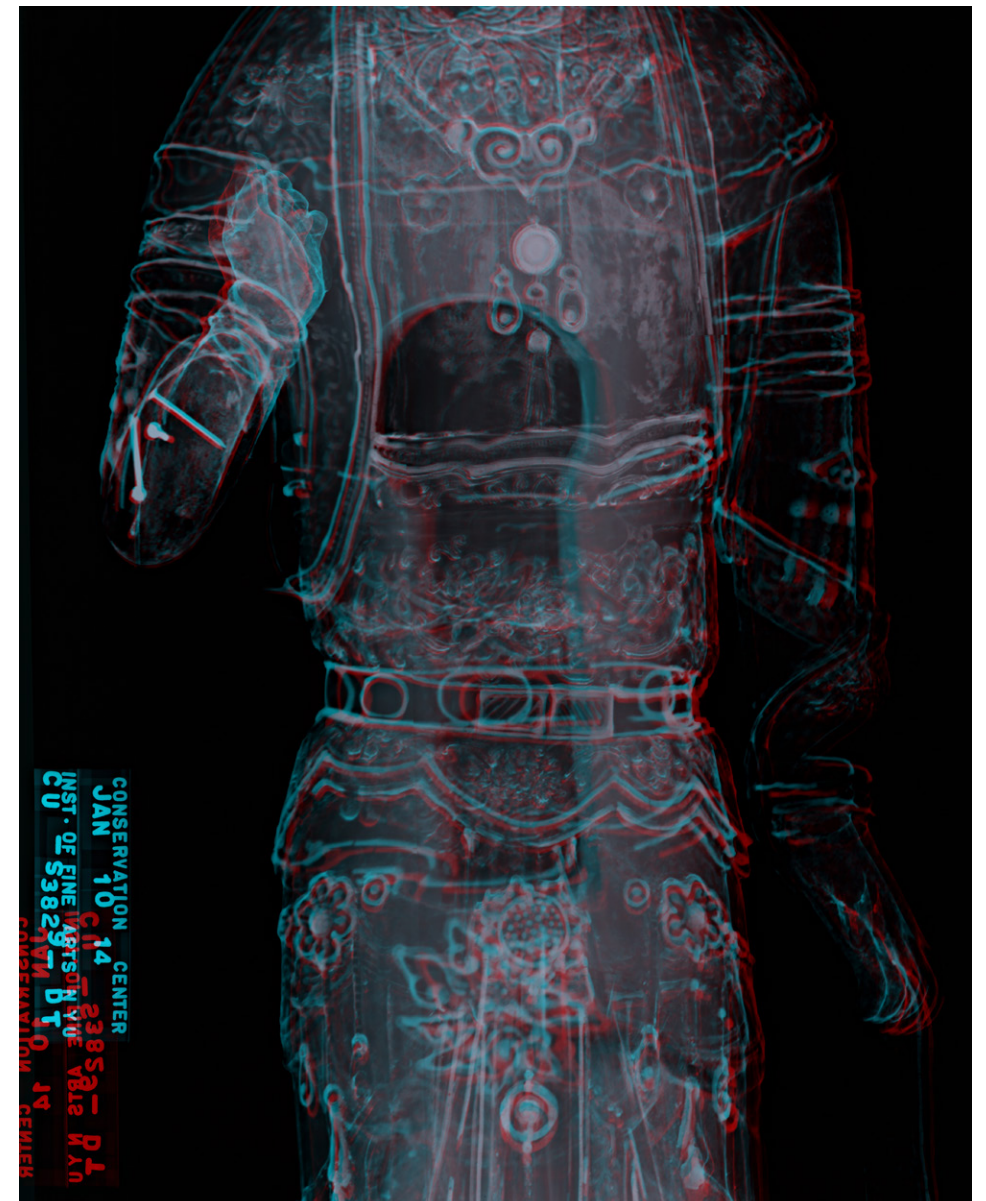
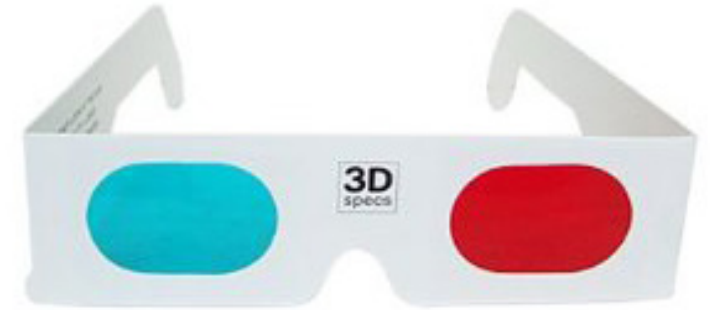
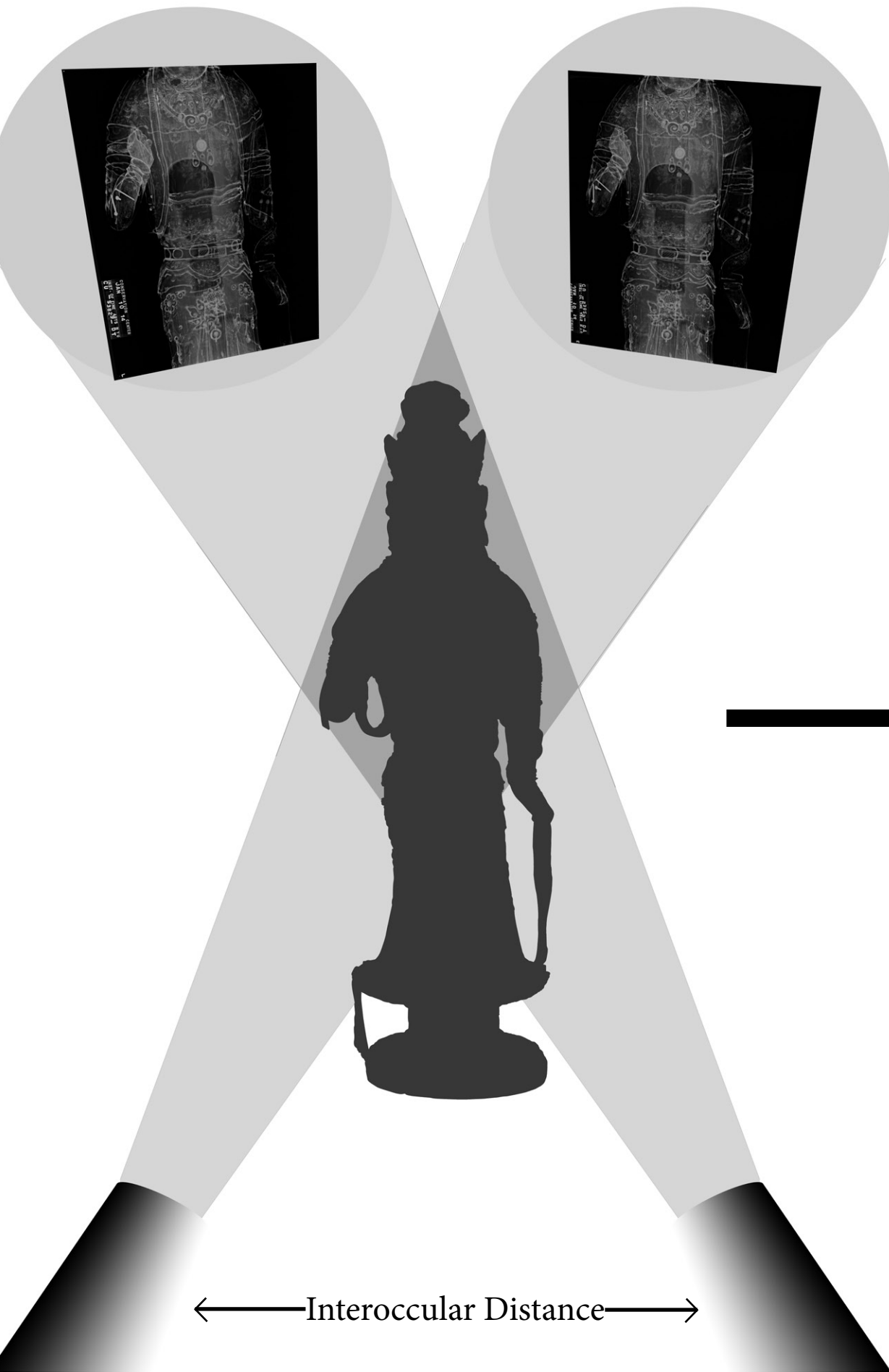


# Structure

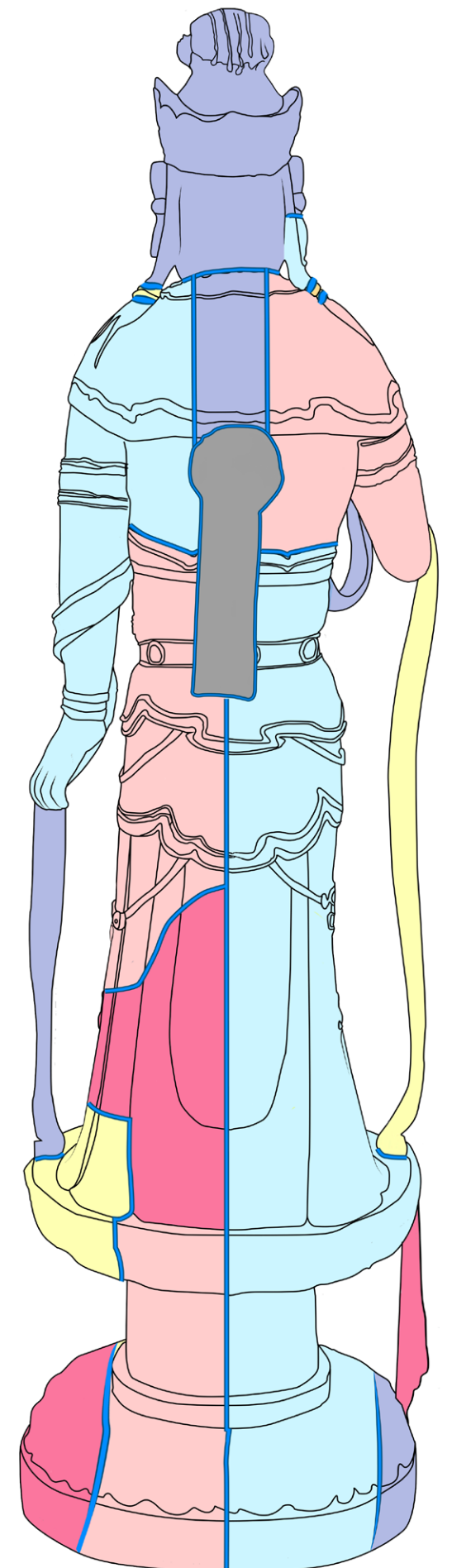
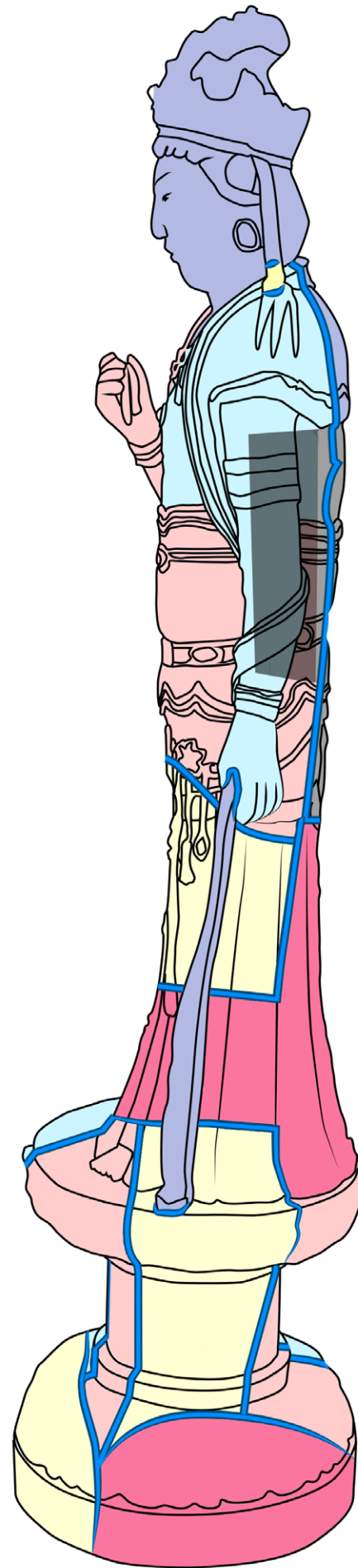
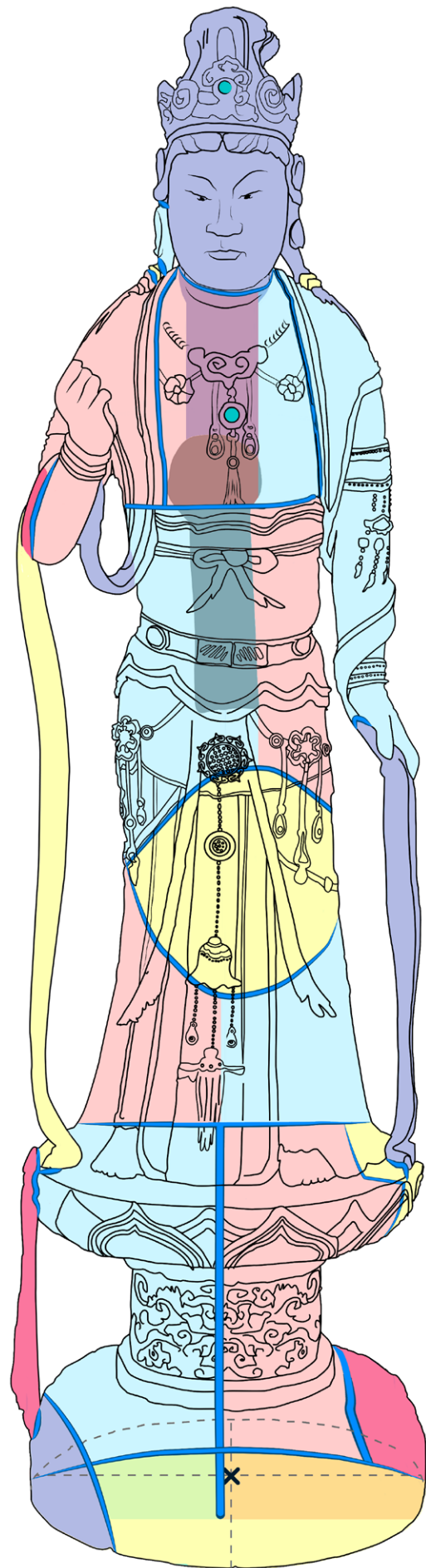




# Stereoradiography









# Materials Analysis

Wood

Image Layer

Glass Cabochons





# Wood





# Image Layer



S 3829 AT 3 01 14



# Image Layer

Blue:

Ultramarine (PLM, XRF)

Azurite (PLM, XRF)

Indigo (PLM, SEM)

Green:

Malachite? (PLM, XRF)

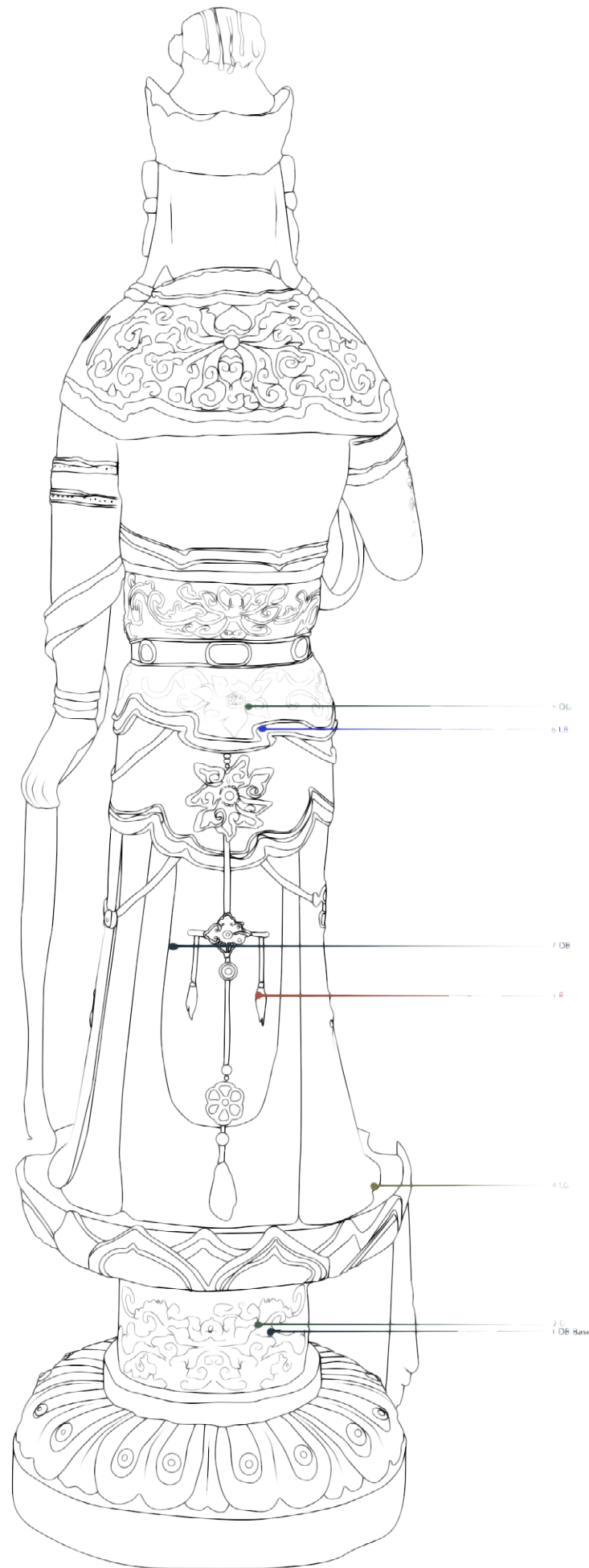
Green Earth?

Red:

Vermilion (PLM, XRF)

White:

Lead White (XRF)

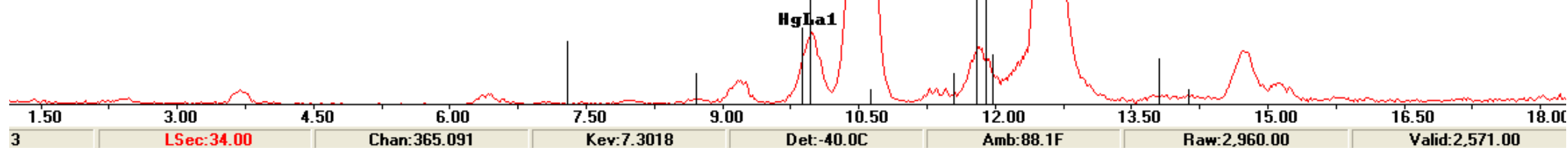






Detail of red belt from back.

XRF spectrum of red belt. Spectrum obtained with a Bruker Tracer III Handheld X-Ray Fluorescence unit at KTI 40.00kV, 1.50 uA (.PDZ 40.00kV, 150uA) and viewed with Bruker S1PXRF software



# Image Layer:

## XRF to Identify Vermilion

### Red

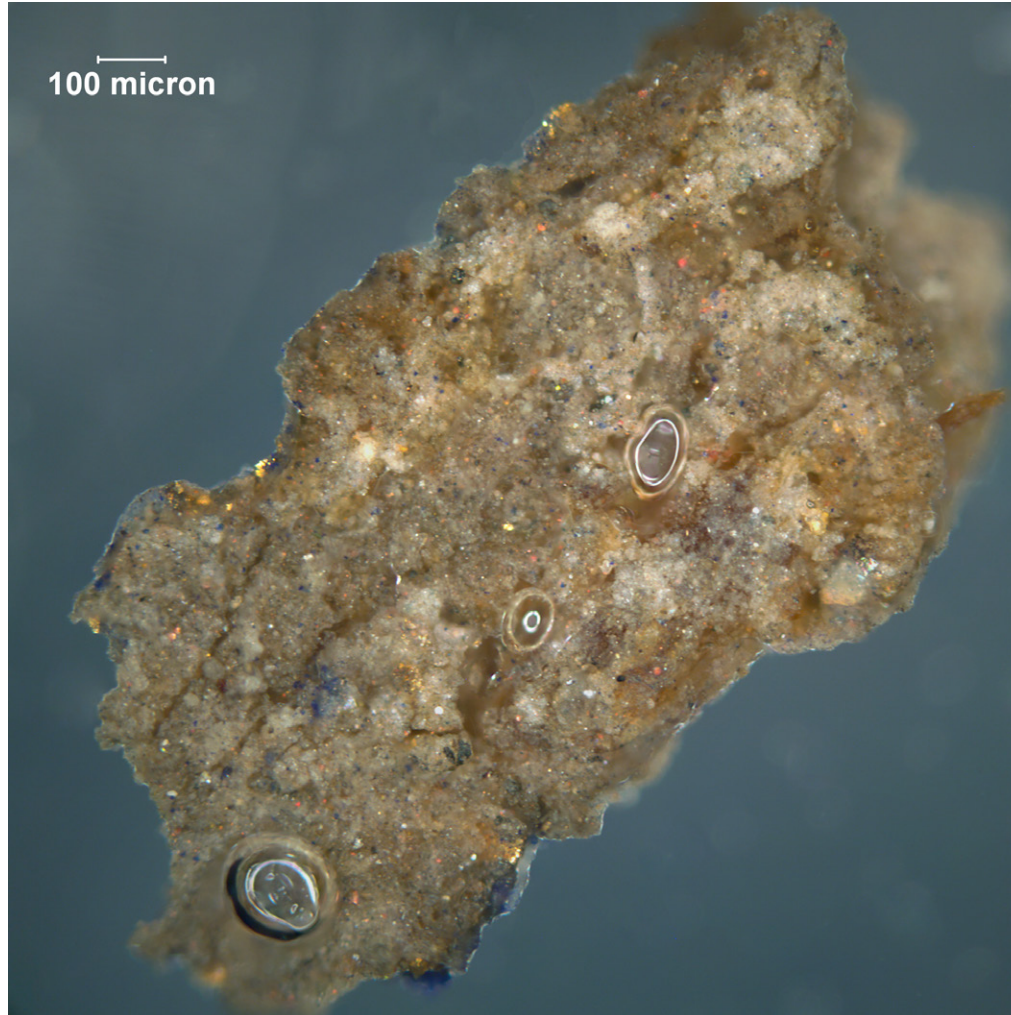
Hg (Mercury) is the characteristic element indicating Vermilion



# Color Reconstruction

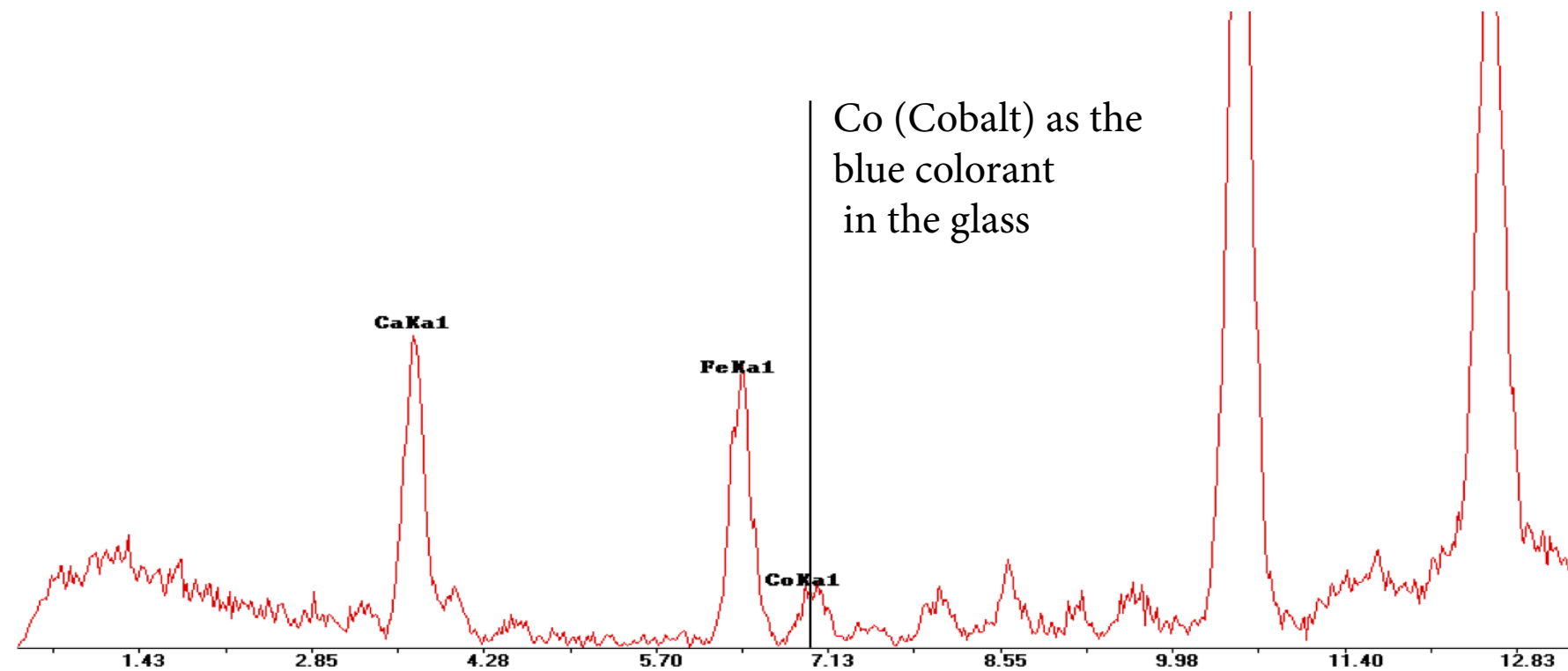








# Glass



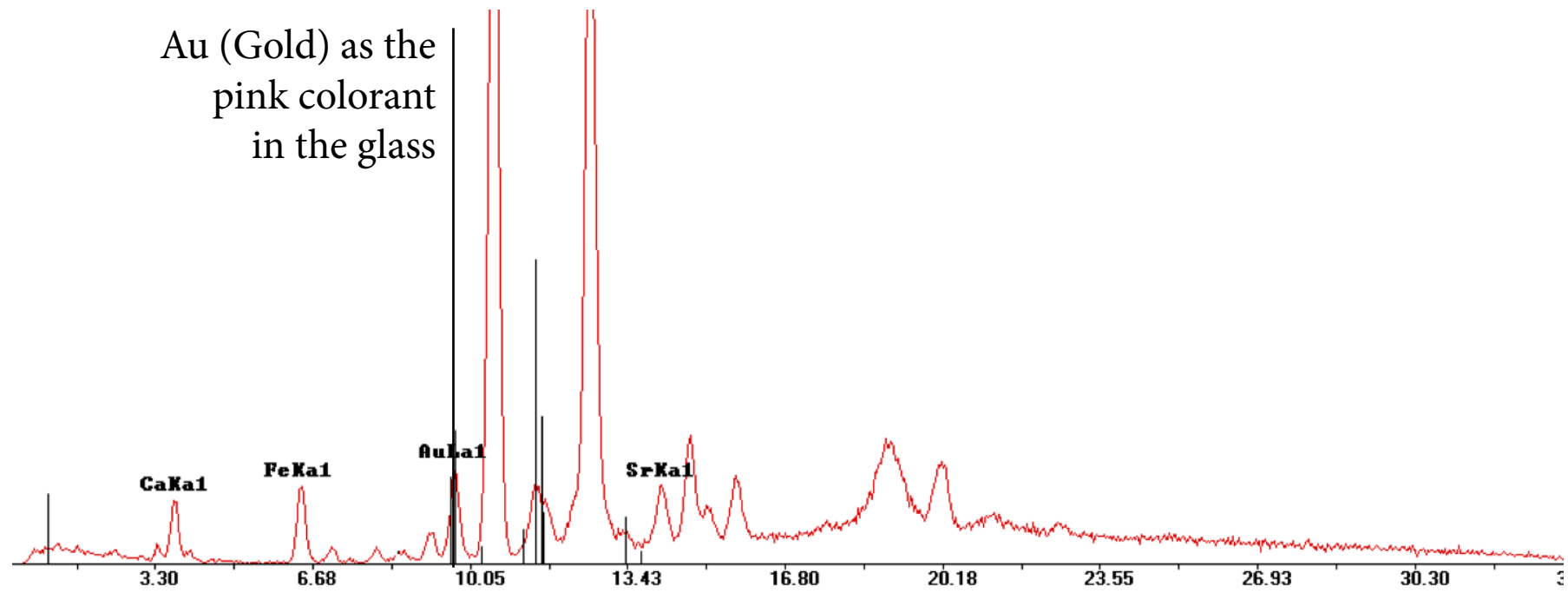
Columbia S3829  
After Treatment  
March 1<sup>st</sup>, 2014



# Glass



Au (Gold) as the  
pink colorant  
in the glass



Columbia S3829  
After Treatment  
March 1<sup>st</sup>, 2014



# “Ruby-Red” Glass



“One Hundred Antiques” Snuff Bottle. Qianlong/Jiaqing Period (1760-1820)  
Cameo Glass. 7.1 cm  
Christie’s, Sale 2196, Lot 186



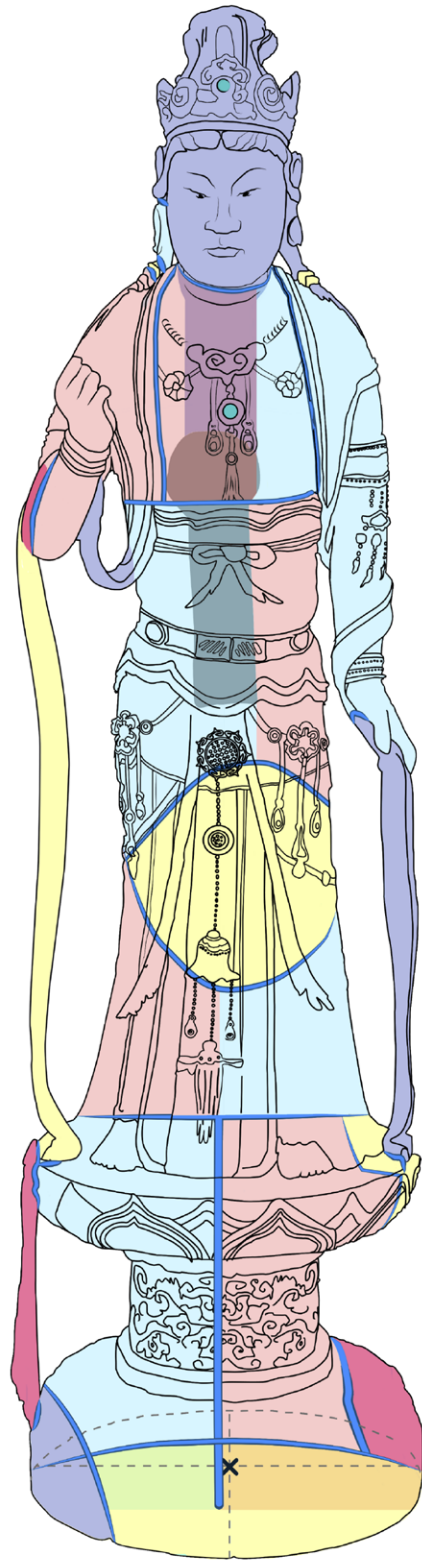
*A Famille Rose ‘Prunus’ Bowl. Qianlong/Jiaqing Period (1760-1820)*  
Gilt porcelain. 17 cm (diameter)  
Christie’s, Sale 2339, Lot 1487



# Conclusions



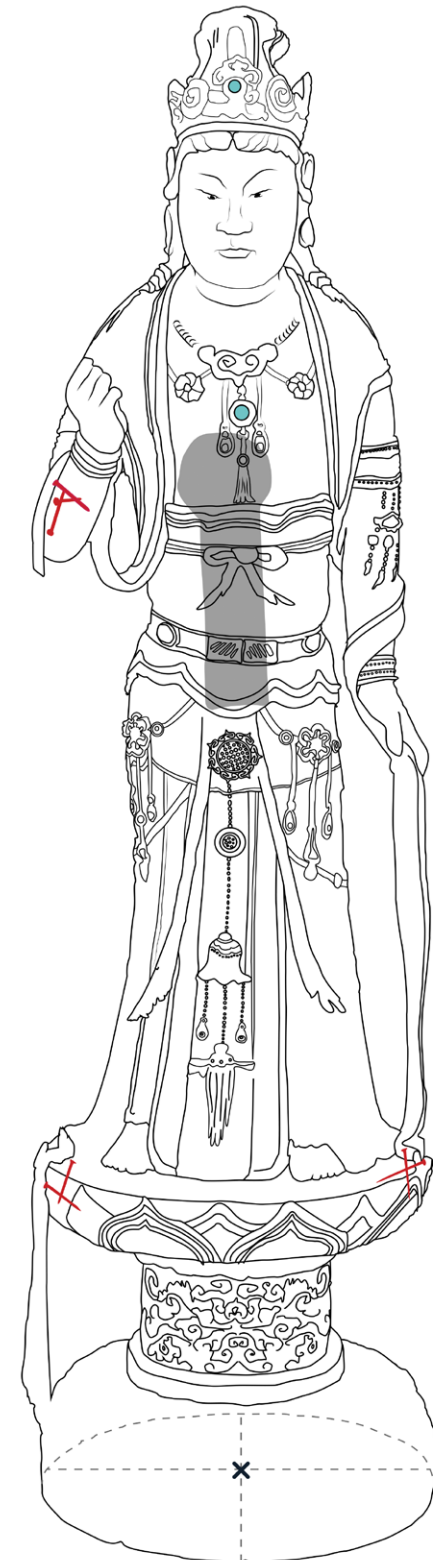
Condition



Structure



Color Scheme



Restoration History



# **Acknowledgments**

**Dr. Roberto Ferrari**, Columbia University

**Avery Architectural and Fine Arts Library**, Columbia University

**Michele Marincola**, Conservation Center, IFA, NYU

**Sarah Barack**, SBE Conservation, LLC

**Melissa Tan**, Conservation Center, IFA, NYU

My Classmates, **Megan Randall**, **Jess Walthew**, and **Annika Finne**

**Dr. Hsueh-man Shen**, Institute of Fine Arts, New York University

**Batyah Shtrum**, SBE Conservation, LLC